

LIFE COVENANT CHURCH, WELLINGTON CAMPUS

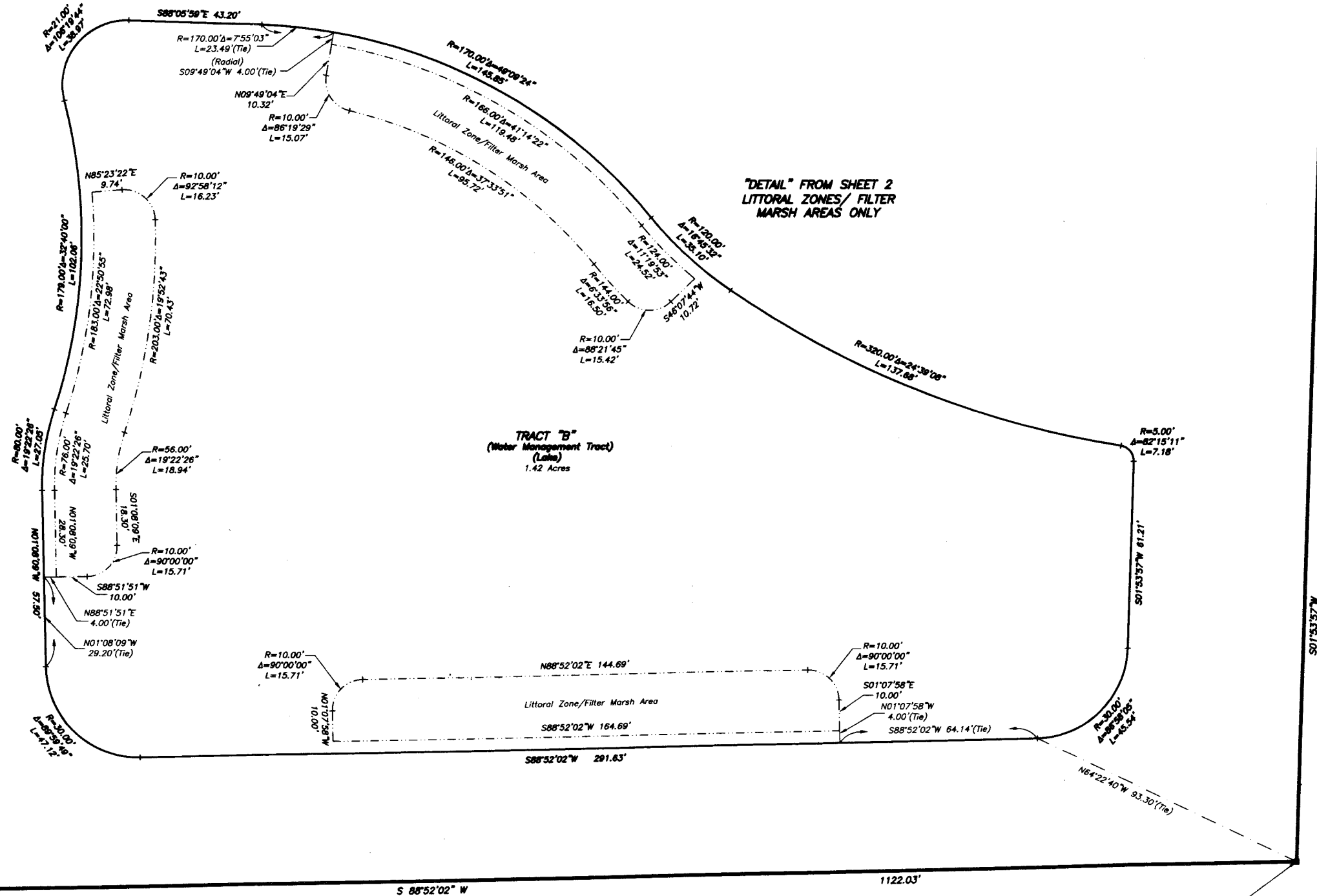
A REPLAT OF A PORTION OF TRACTS 6, 7 AND 8, BLOCK 26, PALM BEACH FARMS
 COMPANY PLAT NO. 3, PLAT BOOK 2, PAGE 45 THROUGH 54, INCLUSIVE
 OF THE PUBLIC RECORDS, PALM BEACH COUNTY, FLORIDA,
 SAID LANDS LYING AND SITUATE IN SECTION 24, TOWNSHIP 44 SOUTH, RANGE 41 EAST,
 VILLAGE OF WELLINGTON, PALM BEACH COUNTY, FLORIDA.

FEBRUARY 2011

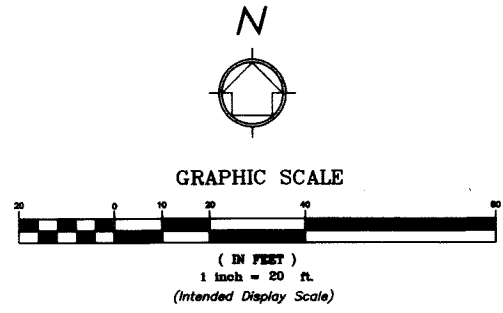
46

State of Florida }
 County of Palm Beach } SS
 THIS PLAT WAS FILED FOR
 RECORD AT _____ M.
 THIS _____ DAY OF _____
 A.D. 2011 AND DULY RECORDED
 IN PLAT BOOK _____ ON
 PAGES _____ THROUGH _____
 SHARON R. BOCK
 CLERK AND COMPTROLLER
 BY: _____
 DEPUTY CLERK

SHEET 3 OF 3 SHEETS



- LEGEND:**
- ☉ = Centerline
 - FP&L = Florida Power & Light
 - L.B.E. = Landscape Buffer Easement
 - L.M.E. = Lake Maintenance Easement
 - LB = Licensed Surveying Business
 - NGS = National Geodetic Survey
 - O.R.B. = Official Records Book
 - P.B.C.R. = Palm Beach County Records
 - P.B. = Plat Book
 - PG = Page
 - PRM = Permanent Reference Marker
 - R/W = Right-of-Way
 - = Set 4"x4" Concrete Monument (PRM) w/ Aluminum Disc Stamped "LB 7055 PRM", except as noted.
 - U.E. = Utility Easement
 - W.E. = Water Easement



Southeast Corner
 LIFE COVENANT CHURCH,
 WELLINGTON CAMPUS

W Wantman Group, Inc.
 Engineering ♦ Planning ♦ Surveying ♦ Environmental
 2035 VISTA PARKWAY, SUITE 100, WEST PALM BEACH, FL 33411
 (866) 909-2220 phone (561) 687-1110 fax
 CERT No. 8091 - LB No. 7055
 ORLANDO - PORT ST. LUCIE - TAMPA
 THIS INSTRUMENT WAS PREPARED BY DEREK G. ZEMAN, P.S.M.
 PROFESSIONAL SURVEYOR AND MAPPER, LICENSE NO. 5655
 FOR THE FIRM: WANTMAN GROUP, INC.